

Yamato

Checkweigher

G series

Self-Diagnosis

Self-Recovery

Optimum Control

Remote Maintenance





Yamato Strain Gauge Load cell Used in Checkweigher G series.

Feature For The Future

Ever since becoming the first Japanese manufacturer to successfully develop strain gauge load cells back in 1953, Yamato has remained a leading force in the application of electronics to the science of weighing. Today, the company produces a full range of load cells, with capacities from as high as 300 tons for use on crane scales to as low as 200 grams for desktop applications.

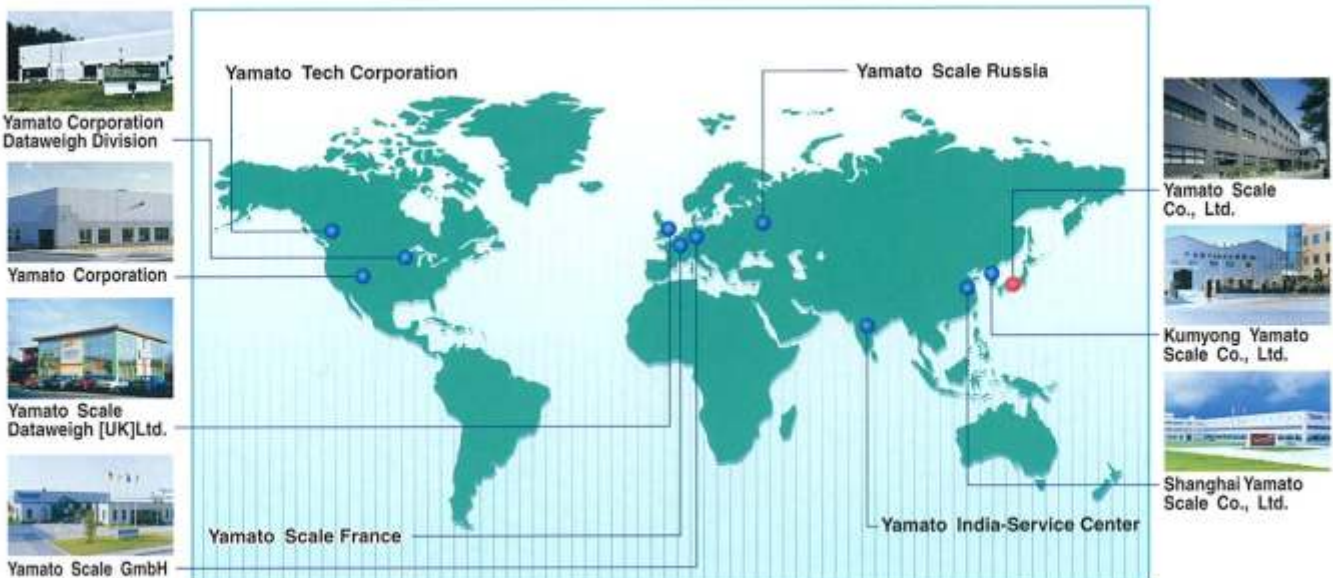
The company's achievements in load cell technology received international recognition in 1980, when the PTB (Physikalish Technische Bundesanstalt) in F.R. Germany approved Yamato scales as the first foreign authorized models. This was an important milestone in the technical development and commercial spread of strain gauge load cell scales.

This is the fundamental technology that Checkweigher G series depends on.

Corporate Milestone & History of Checkweigher

- 1922: Weighing Machine Division of Kawanishi Kikai K.K. founded.
- 1945: Weighing Machine Division of Kawanishi Kikai K.K. reorganized as Yamato Scale Co., Ltd.
- 1953: Produced the first domestically-made strain gauge load cells and Japan's first electronic crane scale.
- 1965: First Yamato Checkweigher CB3 series (differential transformer type) developed.
- 1970: CB70, CB80 and CB90 series released.
- 1980: Developed the Datacell[®] and its load cell were approved by P.T.B. in Germany.
CS-L, CK-L, CL-L series (Load cell type) released.
- 1984: CC series(chain type) launched
- 1985: Established Kumyong Yamato Scale Co., Ltd. in Seoul Korea.
- 1986: Established Yamato Scale GmbH. in Germany.
A/D in multiline of checkweighers patent
- 1990: Established Shanghai Yamato Scales Co., Ltd. in China
CK-LW (water proof type). Rotary grader released.
- 1992: Established Beijing Shouchang Yamato Electric Scale Co., Ltd. in China.
- 1993: Established Yamato Corporation. in U.S.A.
- 1994: Established Yamato Scale Dataweigh [UK] Ltd. in U.K.
- 1996: CSP-L series released.
- 1998: Established Yamato Corporation Dataweigh Division in U.S.A.
Dynamic compensation for weighing data of grader patent.
- 1999: CSG-L (LW), CMG-L (LW) series launched.
- 2000: Established Yamato Scale France
- 2002: Obtained the qualification of ISO9001 (Year2000 Ver.)
- 2004: Released "Digital Load Cell"

Worldwide Sales & Service Network



Advanced Hygiene based on HACCP



Hygiene

- Tubular frame minimizing flat surfaces.
- IP 66 stainless steel housing (only water proof type)
- Compliant design with HACCP
 - a) High temperature wash down is available for the conveyor belt
 - b) Temperature data indication according to HACCP.
 - c) Data memory according to HACCP
 - d) Robust Design
- One touch removable conveyor



High Accuracy & High Speed

- World class operational performance
- High speed operations by high speed CPU.
- Tough tubular frame minimizes floor vibration.
- Advanced digital filter system eliminates the vibration from the floor.

Mechanical option

- Unified Checkweigher/Metal detector Control
- Wind proof cover
- Transfer plate
- Conveyor guide



Printer PRT-80

Advanced, Interactive, Colour Touch Screen for ease of operation and maintenance

Advanced Technology

- Powerful 32 bit high speed CPU
- Display of temperature data to comply with HACCP requirements
- External interface compatibility allows recorded data collection (compliant with HACCP)



EVA0029



CE2000

Colour Touch Screen

- The large (10.4") colour touch screen offers a clear graphic display.
- Colour choice enhanced setup procedures by minimizing potential errors.
- Clear display in the most adverse light conditions

Easy setting



100 Program selection



Scale setup



Auto filter set up

Various indications

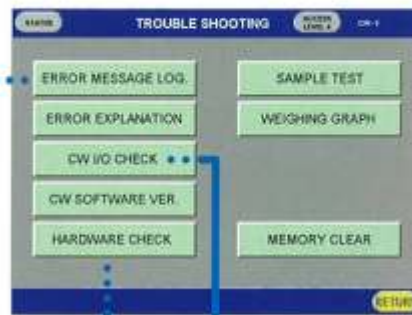


Histogram

Average

Self-diagnosis

- Self check to RAM/ROM, communications monitoring of voltage to actuator unit, zero point and load cell
- Event logs



Error message log



I/O check

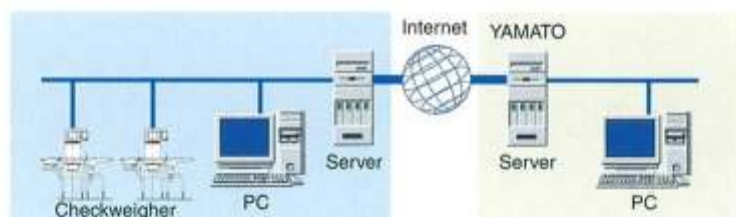


Hardware check

Remote control and maintenance through network



Option



Remote control by PC

Network Capabilities(OPTION)

- Remote control by PC through LAN
- Print through LAN
- Data acquisition
- Software for accumulation of data acquisition
- Feed back control
- Random checkweigher
- Product NO. input



Acquisition Data

Internet(OPTION)

- Comprehensive troubleshooting pages through internet
- Send an E-mail with attachment of current program and system setting
- Receive an E-mail from Yamato including program setting and system definition
- Troubleshooting and FAQ's are available at support corner
- On-line version up of software



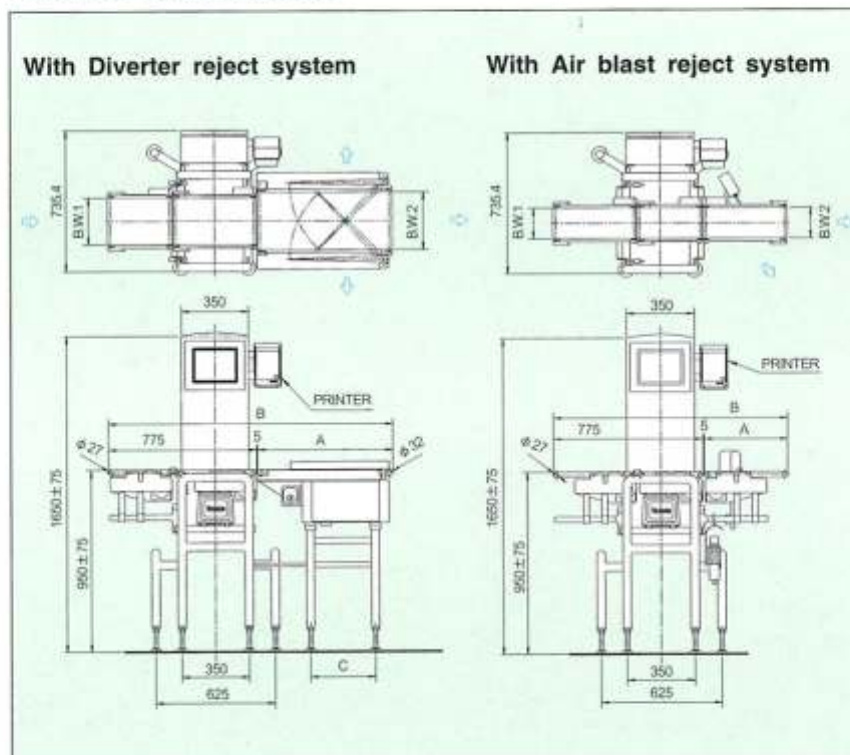
Download Data to PC

CSG SERIES SPECIFICATIONS

Standard specification

Model	CSG06L	CSG06LW	CSG20L	CSG20LW
Range	6~600g	6~600g	20~2000g	20~2000g
Accuracy	±0.2g	±0.4g	±0.3g	±0.5g
Speed (Max.)	330packs/min.	330packs/min.	220packs/min.	220packs/min.
Increment	0.1g	0.1g	0.1g	0.1g
Products	Length	Max. 200mm	Max. 200mm	Max. 300mm
	Width	Max. 160mm	Max. 160mm	Max. 245mm
	Height	Min. 5mm	Min. 5mm	Min. 5mm
Power consumption	500VA	500VA	500VA	500VA
Construction	—	IP66	—	IP66
Power supply	AC100V, 115V, 200V, 220V, 230V, 240V±10%, 50/60Hz, single phase			
Air supply	0.5MPaG (5kg/cm ² G) 100NL/min. (for rejector)			

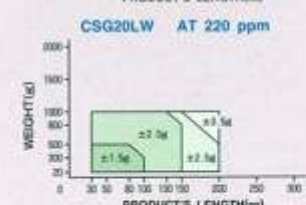
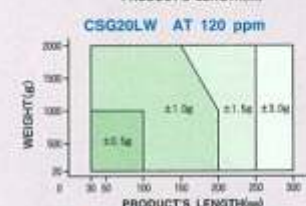
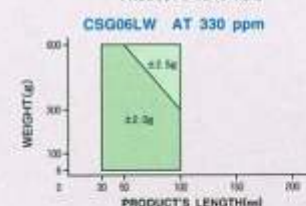
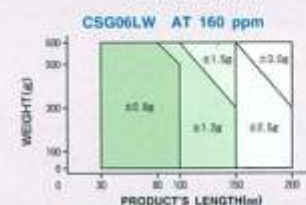
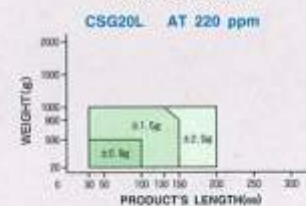
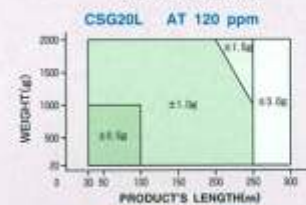
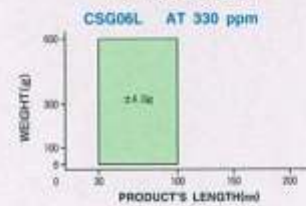
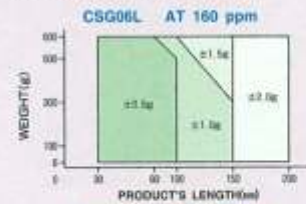
Outside dimensions



Model	Diverter reject system					Air blast reject system			
	A	B	C	Conveyor width		A	B	Conveyor width	
				B.W.1	B.W.2			B.W.1	B.W.2
CSG06L	600	1380	356	160	200	435	1215	160	160
CSG20L	700	1480	356	245	300	435	1215	245	245
CSG06LW	600	1380	356	180	200	—	—	—	—
CSG20LW	700	1480	356	245	300	—	—	—	—

Accuracy chart

Weigh conveyor length
335mm(CSG06L/LW)
435mm(CSG20L/LW)

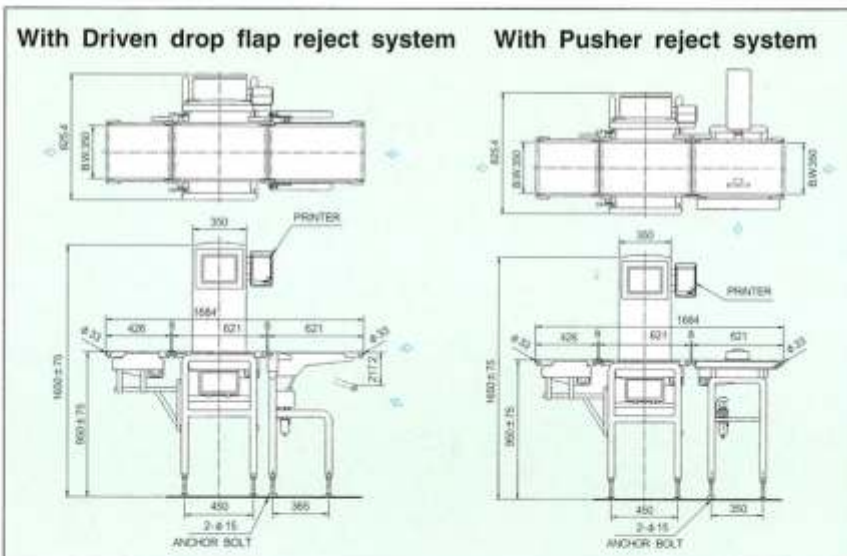


CMG SERIES SPECIFICATIONS

Standard specification

Model	CMG06L	CMG06LW
Range	8000g	
Accuracy	± 1.0g	
Speed (Max.)	100packs/min.	
Increment	0.5g	
Products	Length	Max.500mm
	Width	Max.350mm
	Height	Min.10mm
Power consumption	500VA	
Construction	IP66	
Power supply	AC100V, 115V, 200V, 220V, 230V,240V±10%, 50/60Hz, single phase	
Air supply	0.5MPaG (5kg/cm ² G) 100NL/min.(for rejector)	

Outside dimensions



Standard reject systems

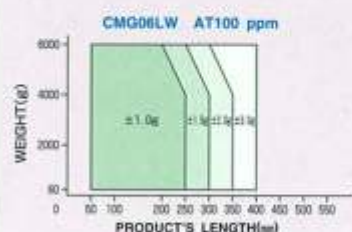
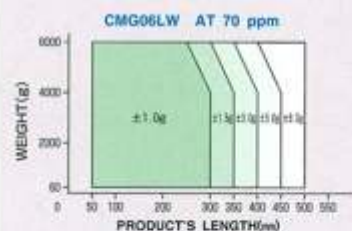
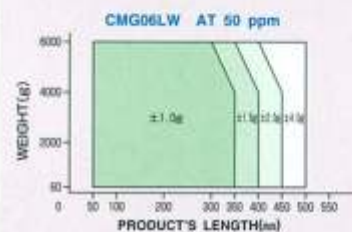
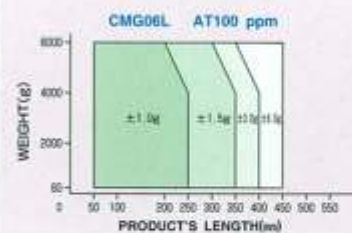
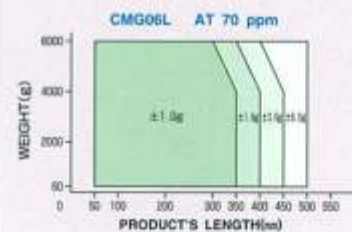
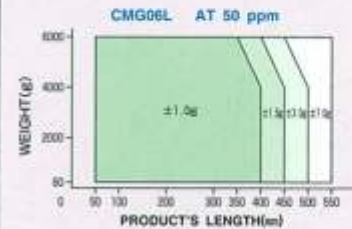
Various reject systems for various products



The accuracy and the speed are subject to change by the shape and the contents of the checked products. These machines are covered by one or more patents worldwide. All illustration and specifications are subject to change without notice and drawing dimensions are not to scale and are approximate

Accuracy chart

Weigh conveyor length:621mm



YAMATO SCALE CO., LTD.

5-22 Saenba-cho, Akashi, Japan 673-8688
Telephone : +81(78)918-5566-5567-5568
Telefax : +81(78)918-5552
URL : <http://www.yamato-scale.co.jp/>
E-mail : export@yamato-scale.co.jp



JQA-0698



JQA-EM5207

Yamato Scale GmbH

Hanns-Martin-Schleyer-Str. 13,
D-47877 Willich, Germany
Telephone : +49(0)2154 9159-10
Telefax : +49(0)2154 40626
URL : <http://www.yamatoscale.com/>
E-mail : sales@yamatoscale.com

Yamato Scale Dataweigh [UK] Ltd.

5 Maple Park, Lowfields Avenue, Leeds,
LS12 6HH, England
Telephone : +44(0)113 271 7999
Telefax : +44(0)113 271 7012
URL : <http://www.yamatoscale.co.uk/>
E-mail : sales@yamatoscale.co.uk

Yamato Scale France

Z.A. des Montatons, 30 rue Denis Papin
91240 Saint-Michel sur Orge, France
Telephone : +33(0)1 6972 1530
Telefax : +33(0)1 6972 1534
URL : <http://www.yamato.fr/>
E-mail : Ventes@yamato.fr

Yamato Corporation

1775 S.Murray Blvd.
Colorado Springs, CO 80916 U.S.A.
Telephone : +1(719)591-1500
Telefax : +1(719)591-1045
URL : <http://www.yamatocorp.com/>
E-mail : scales@yamatocorp.com

Yamato Scale Russia

107140 Russia, Moscow
Ul. Verkhnyaya Krasnoselskaya 3 / 1
Telephone : +7(495)980-64-26
Telefax : +7(495)980-64-27
URL : <http://www.yamatoscale.ru/>
E-mail : salesru@yamatoscale.com

Yamato Corporation Dataweigh Division

6306 W. Eastwood Court
Mequon, WI 53092, U.S.A.
Telephone : +1(262)236-0000
Telefax : +1(262)236-0036
URL : <http://www.yamatodataweigh.com/>
E-mail : dataweigh@yamatocorp.com



This booklet was printed with soy ink on 100% recycled paper.